

More Precision.



optris[®] CSmed

Compact Infrared thermometer to be applied within medical devices



FEATURES

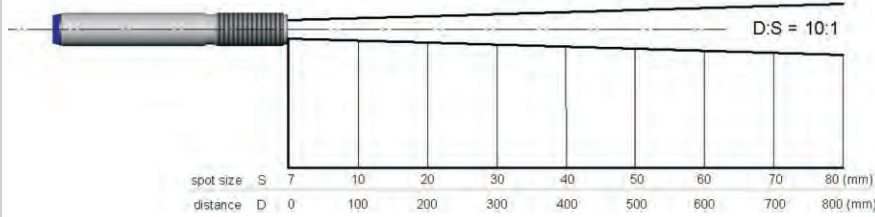
- Size: M12x1, 87 mm long, stainless steel housing
- Temperature range: -20 to 350°C
- Rugged coated silicon optics
- Integrated electronics with LED alarm indication and smart electronic sighting support
- Usable up to 75°C ambient temperature without cooling
- Scalable analog output: 0 - 10 V or 0 - 5 V
- Short circuit and polarity reversal protection
- Adjustable signal processing
- pluggable for simple changing to service purposes

General specifications	
Environmental rating	IP 65 (NEMA-4)
Ambient temperature	-20 - 75° C
Storage temperature	-20 - 85° C
Relative humidity	10 - 95%, non condensing
Vibration	IEC 68-2-6: 3 G, 11 - 200 Hz, any axis
Shock	IEC 68-2-27: 50 G, 11 ms, any axis
Weight	58 g
Electrical specifications	
Output /analog	0 - 5 V or 0 - 10 V 1/10/100 mV/°C
Outputs/digital (optional)	USB or alarm
Inputs	programmable functional input for external emissivity/ambient temperature adjustment (0 - 5 V DC), hold function or USB communication
Connection convert	5 cm with ESTO - Binder 4 pol. miniature cable plug series 712
Power supply	5 - 7 V DC (range I); 12 - 28 V DC (range II)
Current draw	15 mA (I); 9 mA (II)

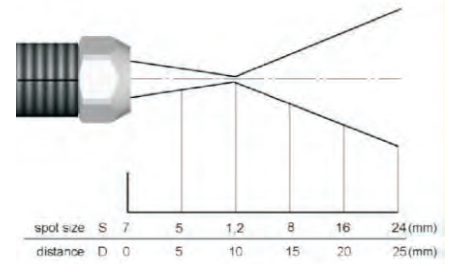
Measurement specifications	
Temperature range (scalable via software)	-20 - 350°C
Spectral range	8 - 14 μm
Optical resolution (90% energy)	10:1
CF-Optics (optional)	1,2 mm @ 10 mm
System accuracy (at ambient temperature 23 ±5°C)	±1,5% or ±1,5 °C ¹
Repeatability (at ambient temperature 23 ±5°C)	±0.75% or ±0.75°C ¹
Temperature resolution (object temperature > 20°C, AVG > 0,2 s)	0,2°C
Response time (90%)	30 ms - 999 s, einstellbar
Emissivity/Amplification (adjustable via software)	0.100 - 1.100
Transmissivity (adjustable via software)	0.100 - 1.100
Signal processing (parameter adjustable via software)	MAX-/Min-Hold, average

¹ object temperature > 0°C; whichever is greater

Optical specifications

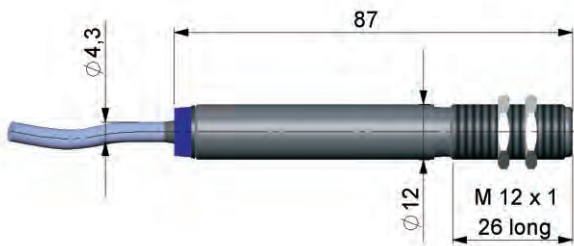


10:1 optics

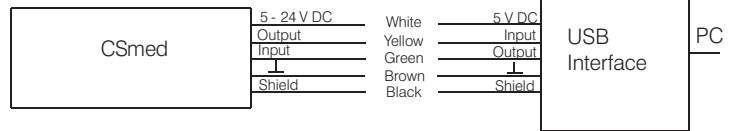


10:1 optics with CF-lens

Dimensions/Interface

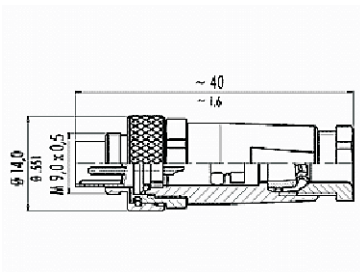


Dimensions CSmed



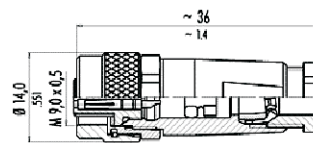
Connection diagram CSmed/USB programmable interface

Cable plug at CSmed (included in delivery)



ESTO-Binder
series 712 / 99-0409-0004

Cable box onto equipment side

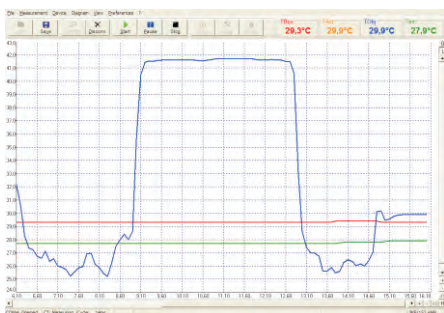


ESTO-Binder
series 712 / 99-0410-1004



pole chart contact side
1 green 2 brown
3 white 4 yellow

CompactConnect Software



- Software for easy sensor setup and remote controlling, supports multi tasking
- Graphic display for temperature trends and automatic data logging for analysis and documentation with 1 ms response time
- Adjustment of signal processing functions and programming of outputs of the sensor
- Automatic emissivity adjustment
- The software CompactConnect allows to customize the sensor to application needs of the user